

DANE COUNTY
REGIONAL AIRPORT
MADISON



Noise Abatement Subcommittee

Review of Noise Complaint Activity

April 24, 2013

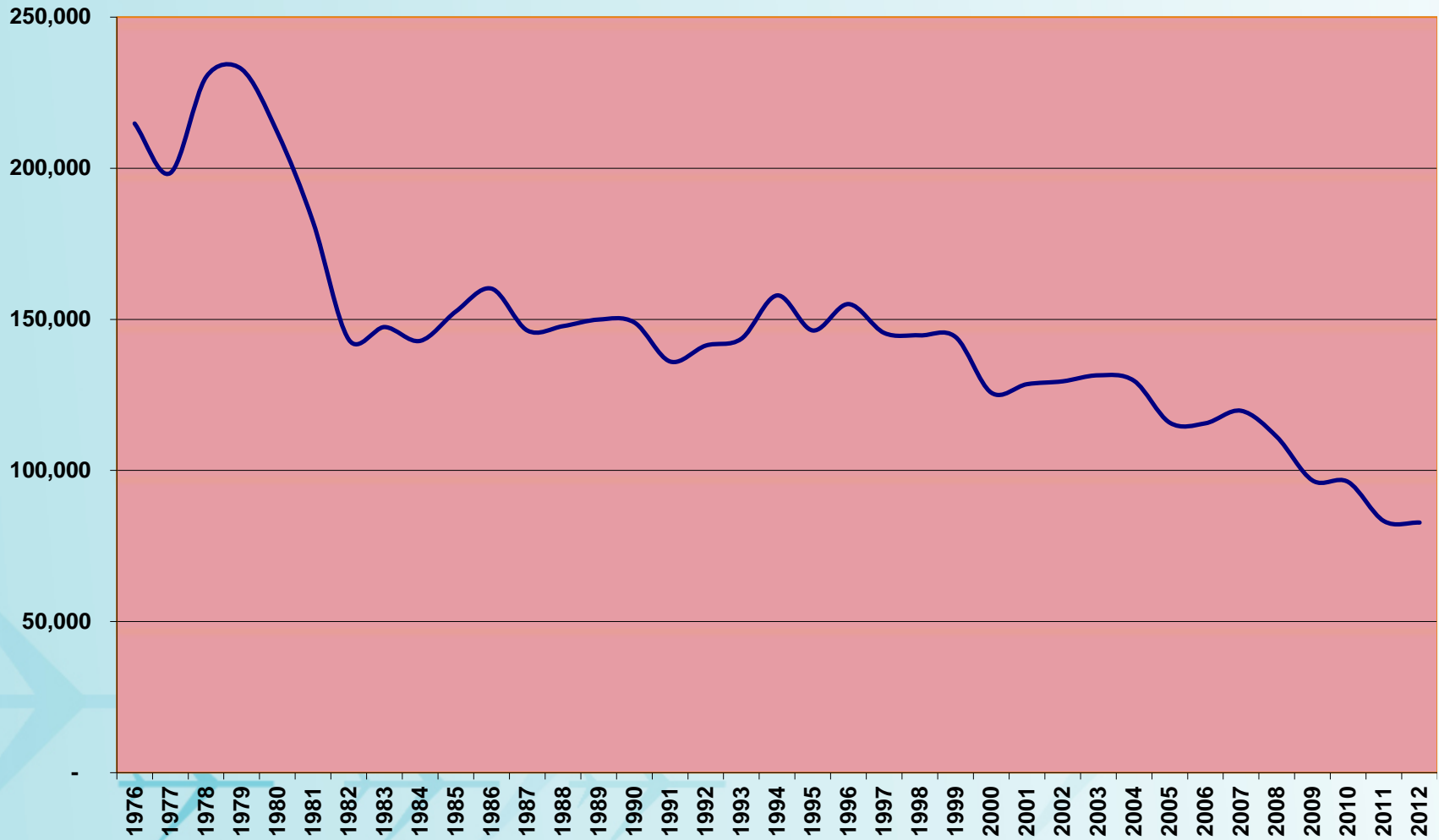
It's all about the journey.

AIRCRAFT MOVEMENTS

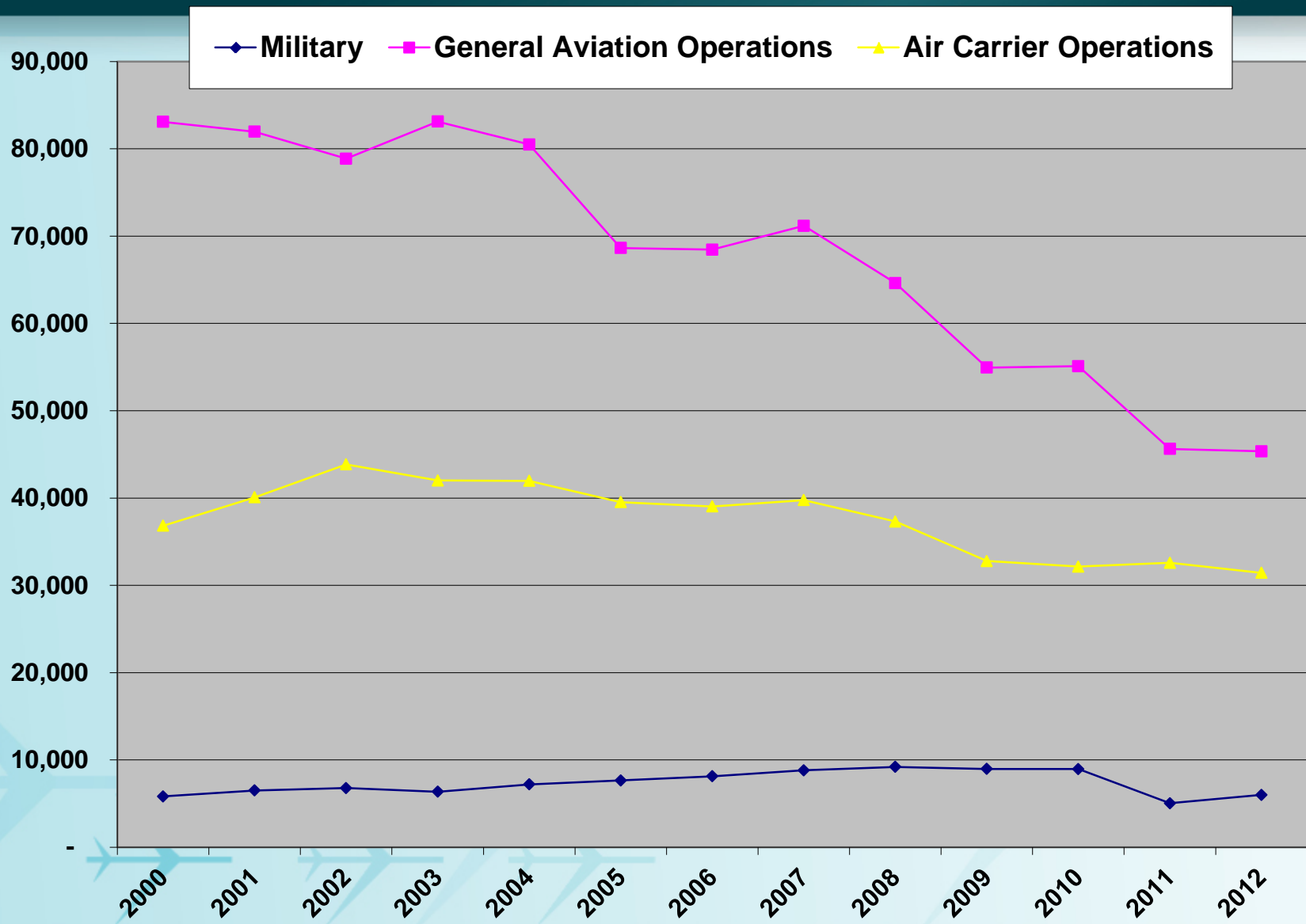
Aircraft Movements	OCT 12– MAR 13	OCT 11– MAR 12	% Change
<i>Air Carrier</i>	15,892	15,329	3.7%
<i>Military</i>	2,425	2,515	-3.6%
<i>General Aviation</i>	18,020	21,591	-16.5%
<i>Total Movements</i>	36,337	39,435	-7.9%

Aircraft Operations

Historical Total Aircraft Operations, DCRA

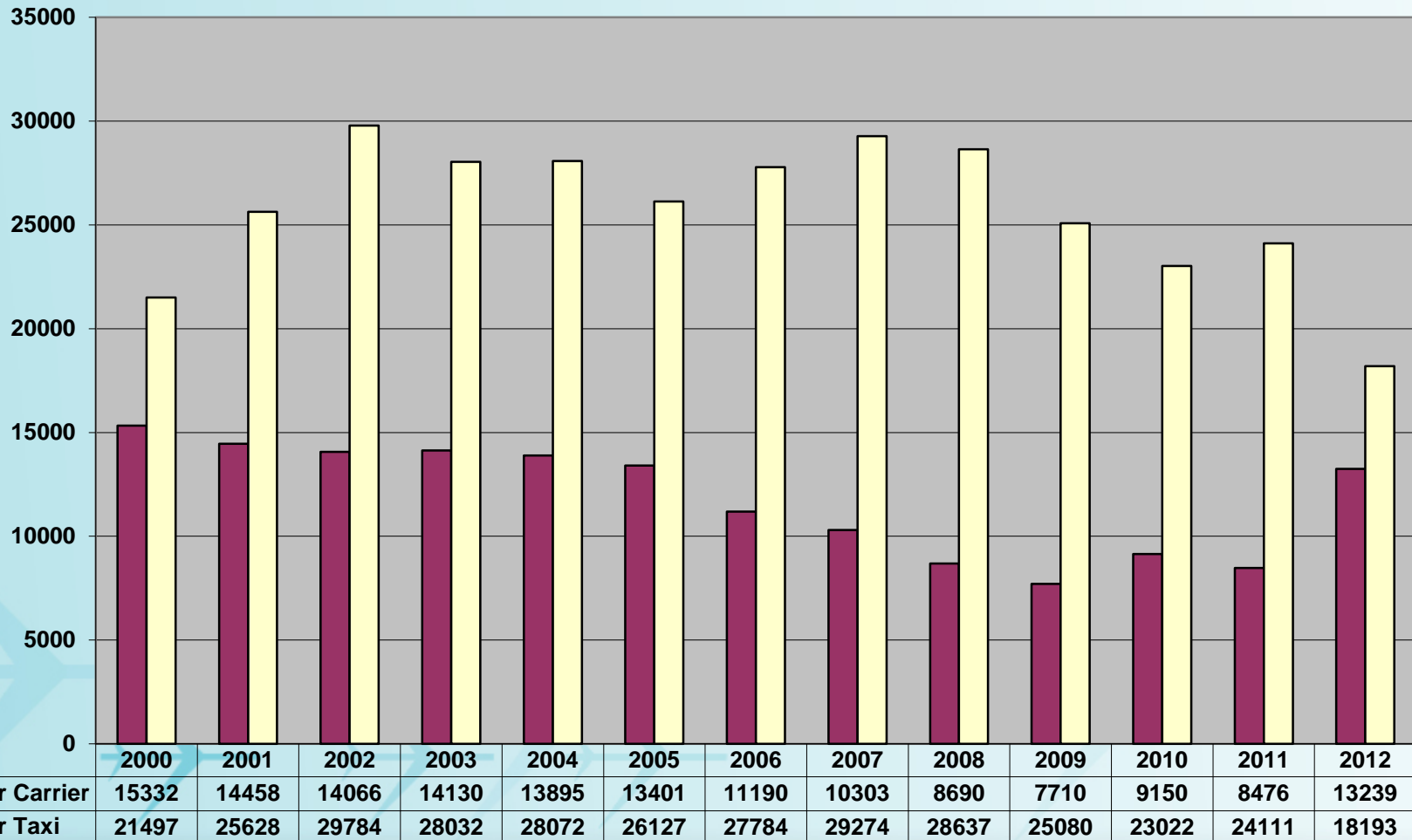


HISTORICAL AIRCRAFT OPERATIONS BY TYPE



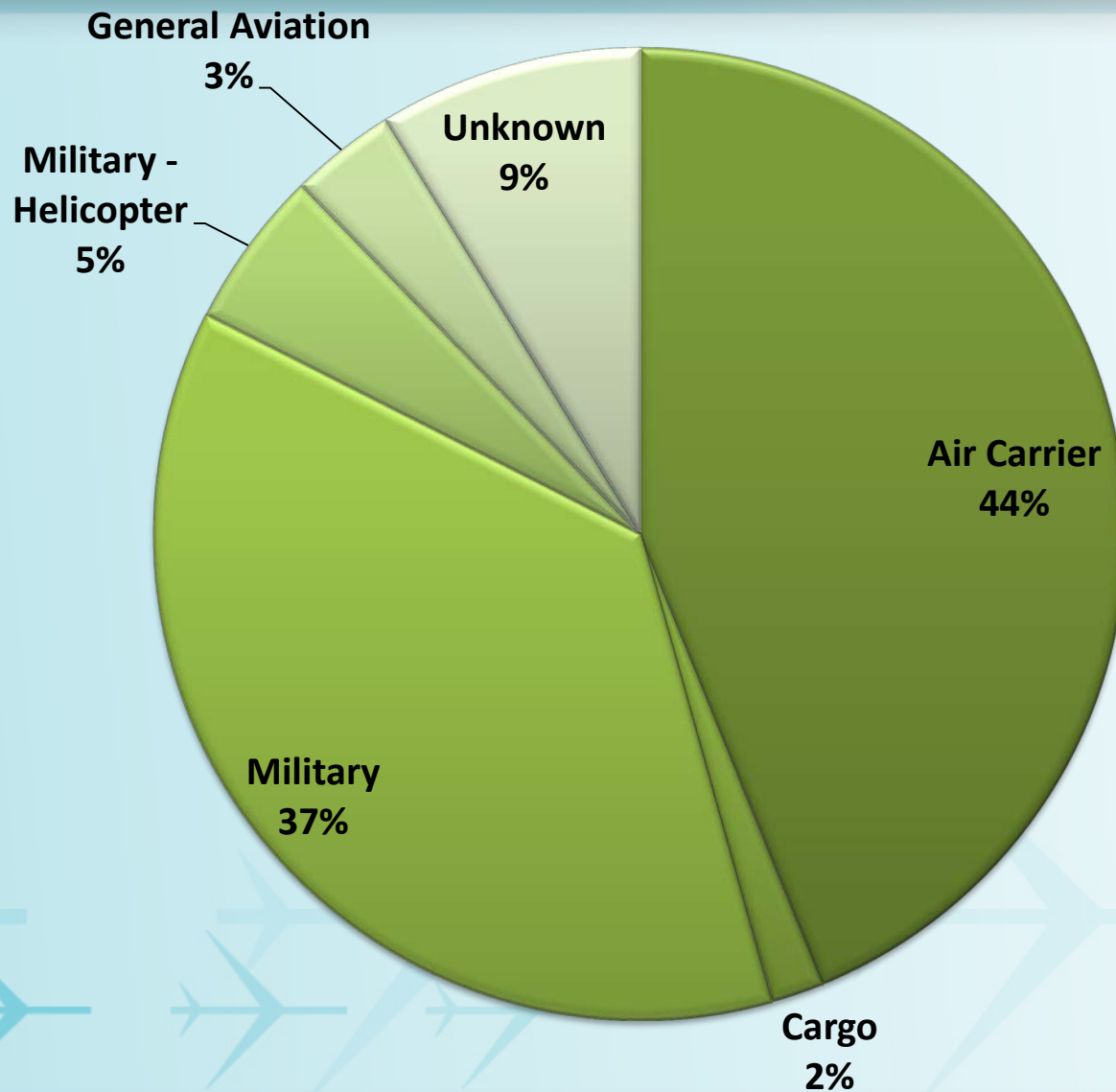
Air Carrier (A-320, DC-9) vs Air Taxi (CRJ, ERJ)

AC aircraft have 60 or more seats
AT aircraft have 59 seats or less



COMPLAINTS BY AIRCRAFT TYPE

APR 12– SEP 12

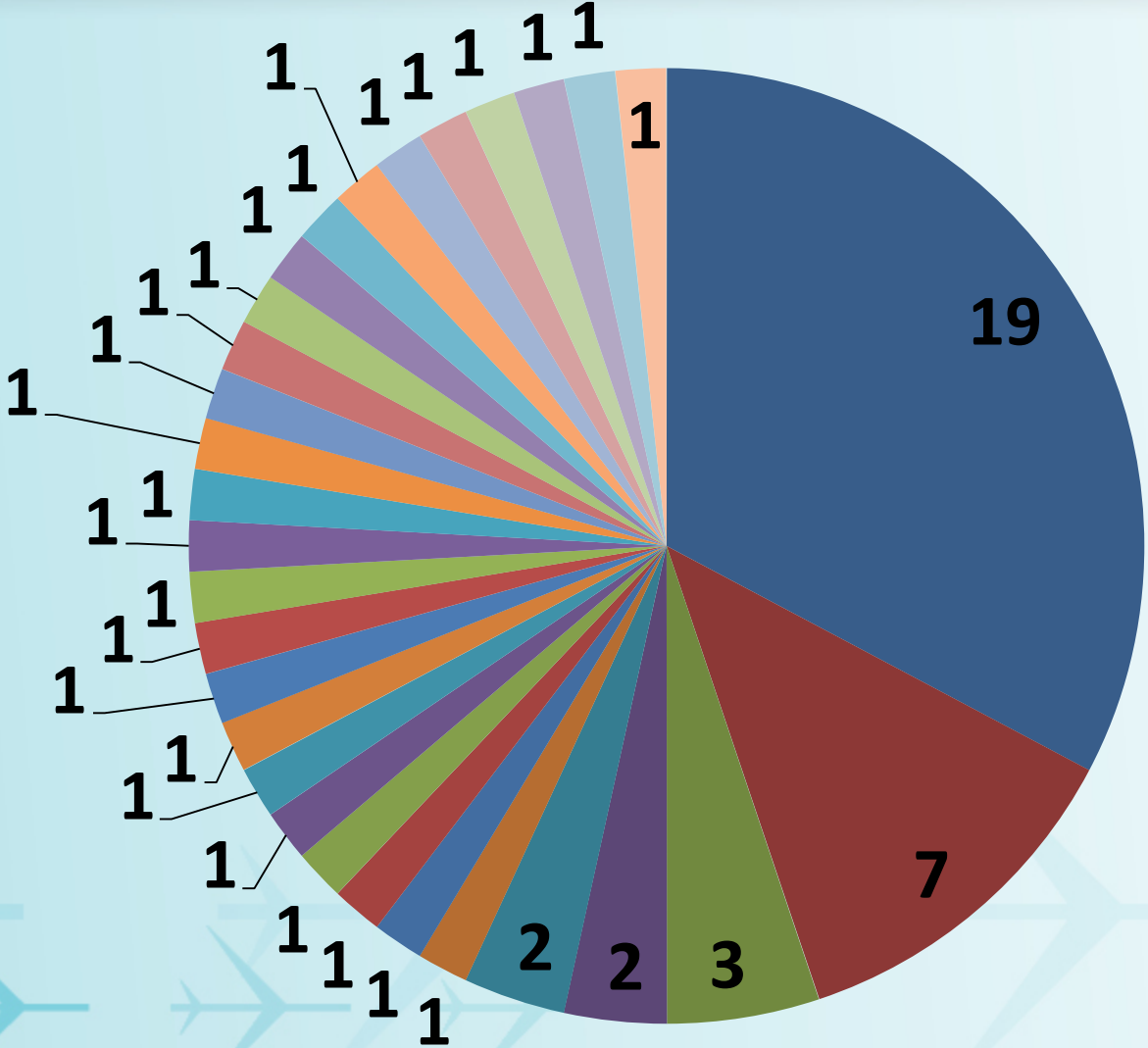


Noise Complaint Submission Process

- Online (40)
- Phone (16)
- Other (2)

Complaints Per Household (30)

OCT 12 – MAR 13



REPEAT CALLERS

OCT 12 – MAR 12

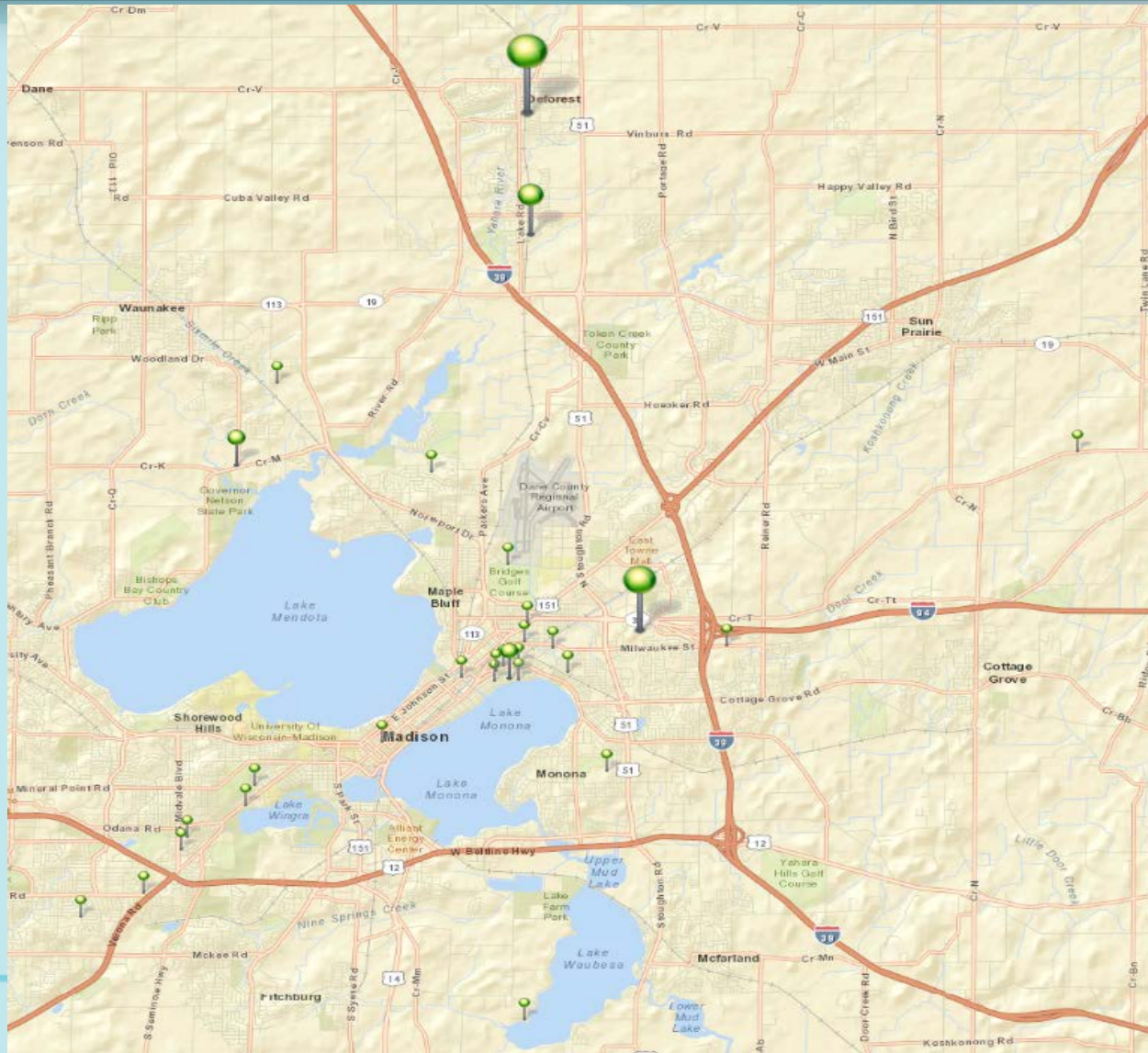
AREA	NUMBER OF CALLS
MADISON	30 (23 CALLERS)

COMPLAINTS BY AREA

Area	OCT 12 - MAR 13		OCT 11 - MAR 12	
	Complaints	Callers	Complaints	Callers
<i>Bloomington Grove</i>	0	0	0	0
<i>Burke</i>	0	0	0	0
<i>Deerfield</i>	1	1	0	0
<i>DeForest</i>	22	2	0	0
<i>Fitchburg</i>	1	1	0	0
<i>Madison</i>	30	23	34	17
<i>Marshall</i>	1	1	0	0
<i>Middleton</i>	0	0	0	0
<i>Monona</i>	0	0	0	0
<i>Stoughton</i>	0	0	0	0
<i>Windsor</i>	0	0	0	0
<i>Verona</i>	0	0	0	0
<i>Wausaukee</i>	3	2	0	0
Total	58	30	34	17

COMPLAINT LOCATIONS

OCT 12 – MAR 13



NOISE COMPLAINT CALLS

OCT 12 – MAR 13

	OCT	NOV	DEC	JAN	FEB	MAR	TOTAL
DAY	9	13	10	4	16		52
NIGHT	2		2	2			6
TOTAL	11	13	12	6	16	0	58

COMPLAINT HISTORY

OCT 12 – MAR 13

	1	2	3	4	5	6	7	8	9	10	11	12	13	14	15	16	17	18	19	20	21	22	23	24	25	26	27	28	29	30	31	
OCT			U						C								G				A	M					M M M M M			M		
NOV																				M A A A A A						M	M M M G	M A A	M			
DEC				U U	A	M						M		U M	M M		U	M												A		
JAN										A						M								H			A					
FEB					A					A A A							A A A A					A		U A A			A	A				
MAR						H H																										

- A = Airline
- C = Cargo
- G = General Aviation
- M = Military Fixed Wing
- H = Military Helicopter
- U = Unknown

Wisconsin Wind Data*

*National Weather Service

Month	Prevailing Wind	Greater than 5 kts
Jan	WNW – 11.5	94.0%
Feb	WNW – 12	93.4%
Mar	NW – 13	93.9%
Apr	S – 11.4	93.6%
May	S – 10.4	93.0%
Jun	S – 9.7	91.6%
Jul	S – 9.2	90.1%
Aug	S – 9.1	88.9%
Sep	S – 9.8	90.1%
Oct	S – 10.4	92.2%
Nov	S – 10.7	94.3%
Dec	WNW – 12.4	94.0%
Annual	S – 12.4	92.4%

WEATHER / RUNWAY DATA	
WINDS AT 5 KNOTS OR HIGHER ¹	81.61%
VISIBILITY AT 5 STATUTE MILES OR LESS	18.42%
RUNWAYS CLOSED ²	18/36 = 11:47 3/21 = 415:48 14/32 = 428:28
¹ – Based on METAR weather observations at the time of recorded aircraft operations. ² – Runway closures primarily due to snow removal operations	

RUNWAY USE

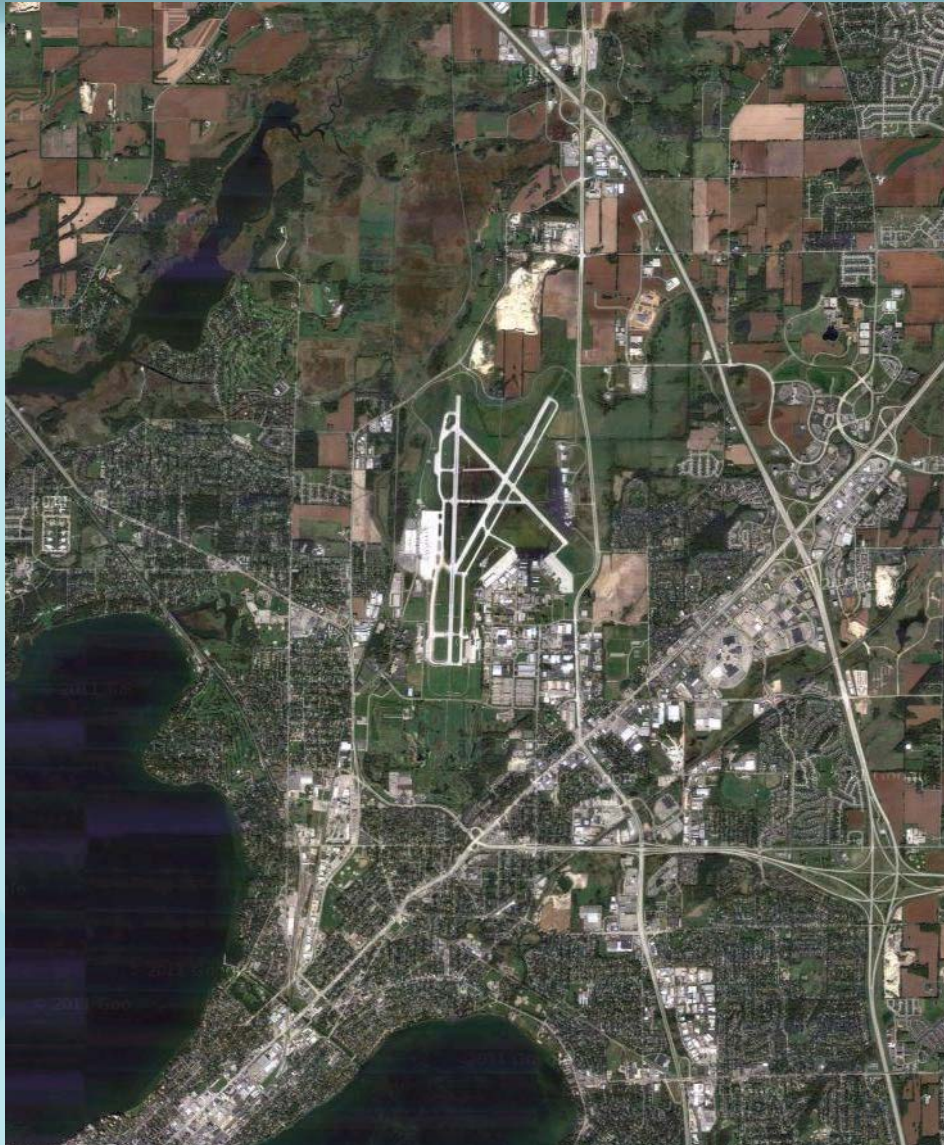
Aircraft observed departing to the North	52.91%
Aircraft observed arriving from the North	36.20%
Aircraft observed departing to the South	47.09%
Aircraft observed arriving from the South	63.80%

PASSUR FLIGHT TRACKING

6,285 operations recorded by Passur flight monitoring system

315 Passur observations of departures to the north and arrivals from the north when conditions allow for implementation of Noise Abatement Procedures

WIND CONDITIONS SUMMARY



- WINDS LESS THAN 5 KNOTS
- VISIBILITY GREATER THAN 3 MILES
- RUNWAY CONDITION IS DRY
- PILOT COMPLIES WITH VOLUNTARY CONTRA FLOW OPERATION

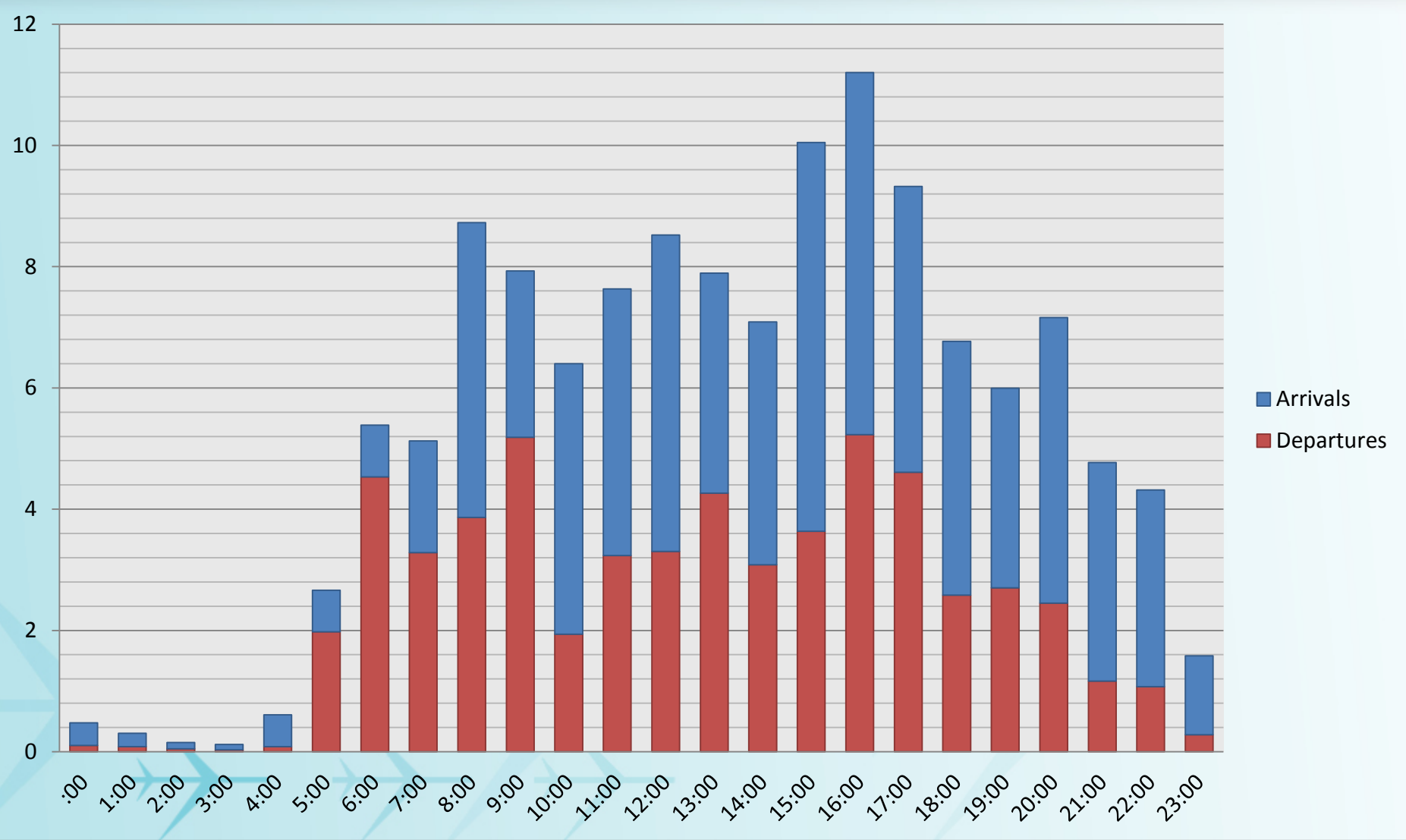
**** With 100% compliance of Noise Abatement Procedures, there are times aircraft are required depart to the south and arrive from the south. ****

RUNWAY USE FACTORS			
	Wind	Visibility	Ceiling
South Departure	72.73%	17.32%	13.97%
South Arrival	74.48%	19.19%	31.07%

**** Safety, traffic, airline requirements, and weather are all components which are factored into a pilot's decision when landing and taking off. ****

AVERAGE HOURLY OPERATIONS

OCT 12 - MAR13



CONTACT INFORMATION

24 Hour Aircraft Noise Line: **246-5841**

Online Form: <http://www.msnaairport.com/community/noise.aspx>

Madison Automated Weather: **249-0615**



Questions?

